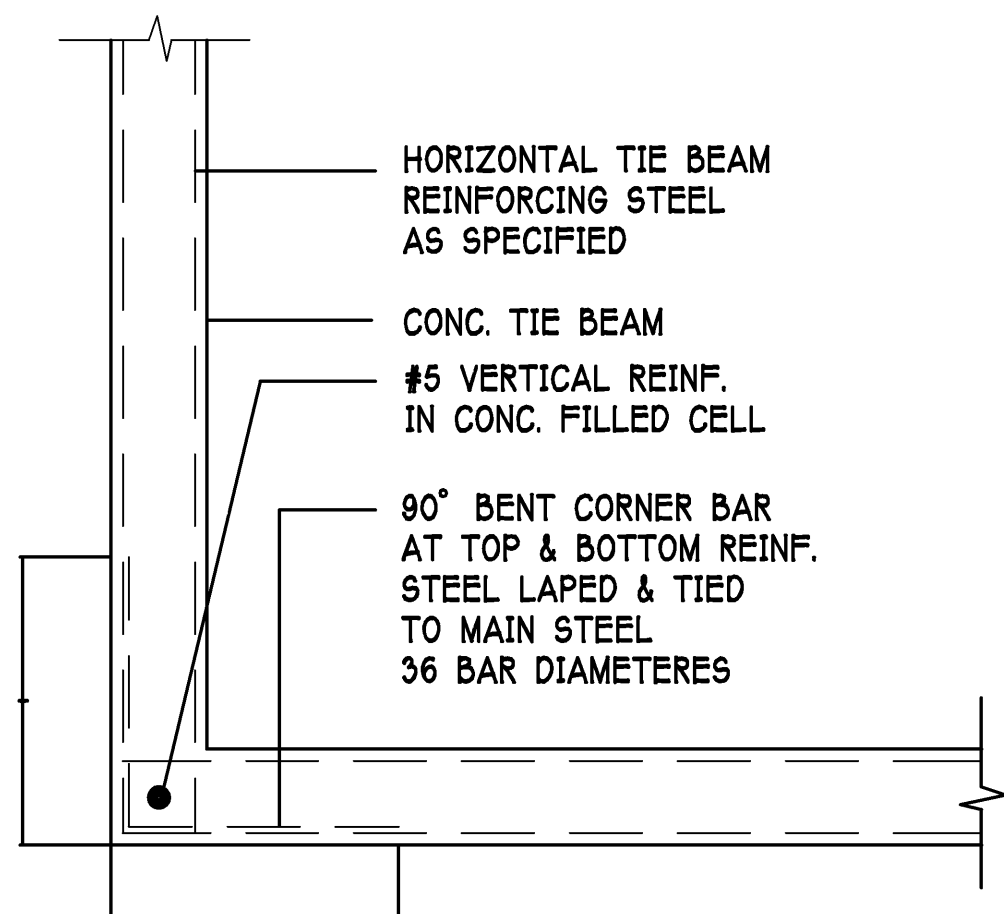
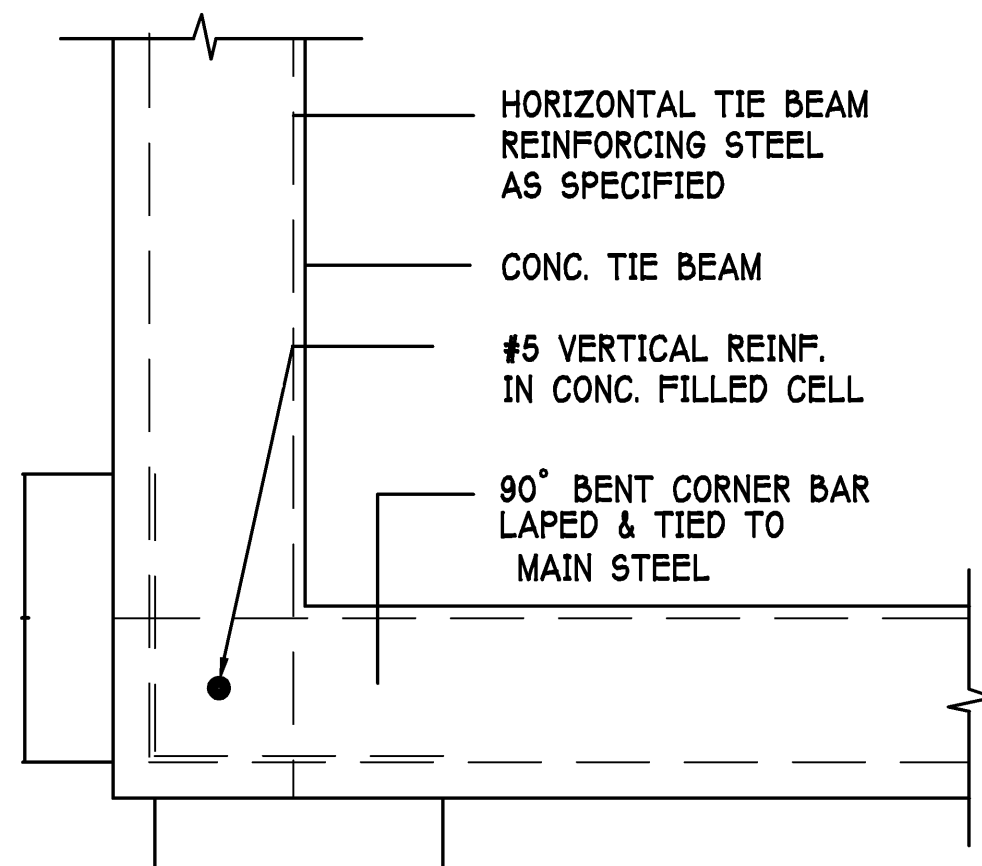


CONC. TIE BEAM STEP DETAIL

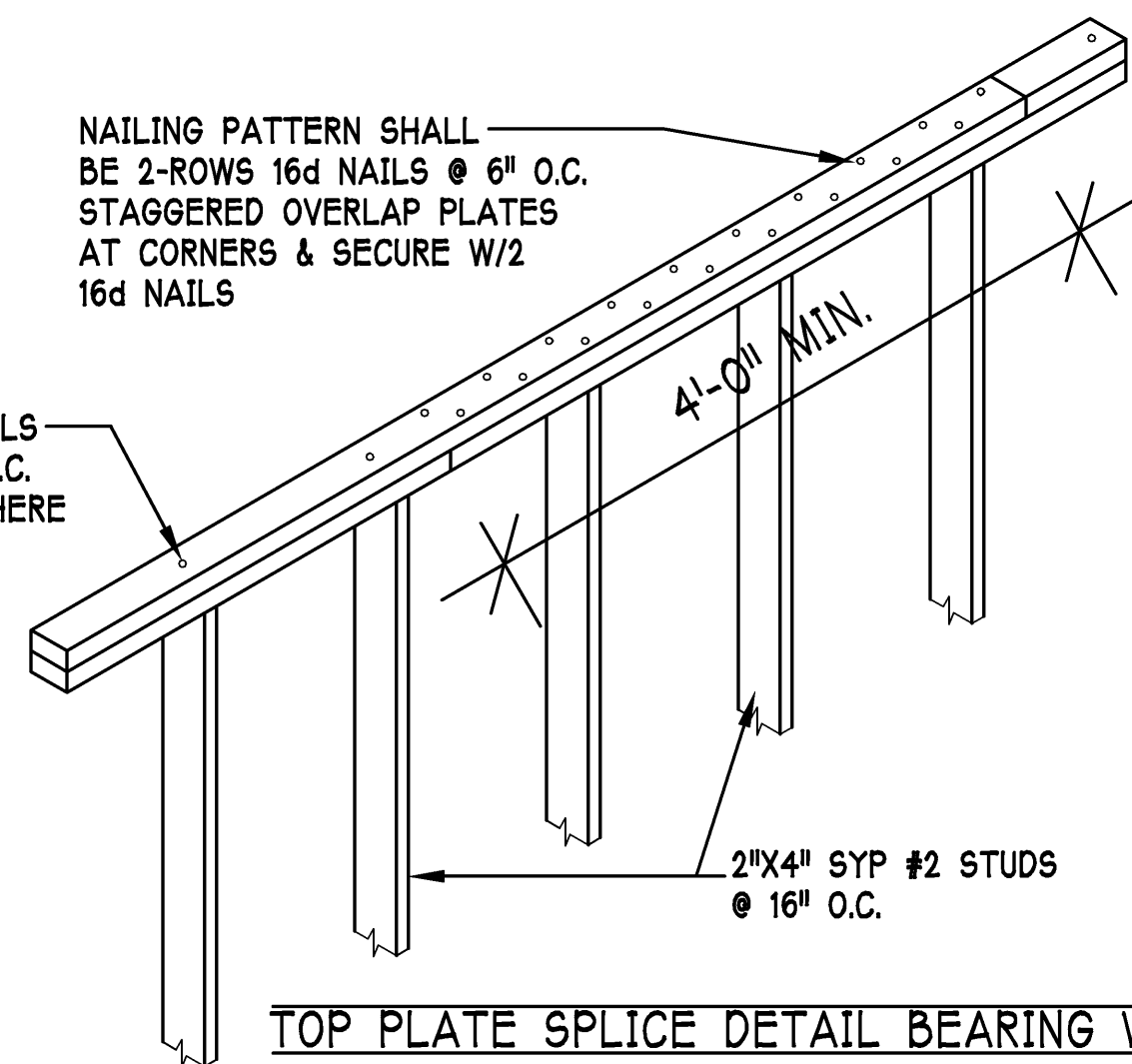


TYPICAL TIE BEAM- CORNER DETAIL

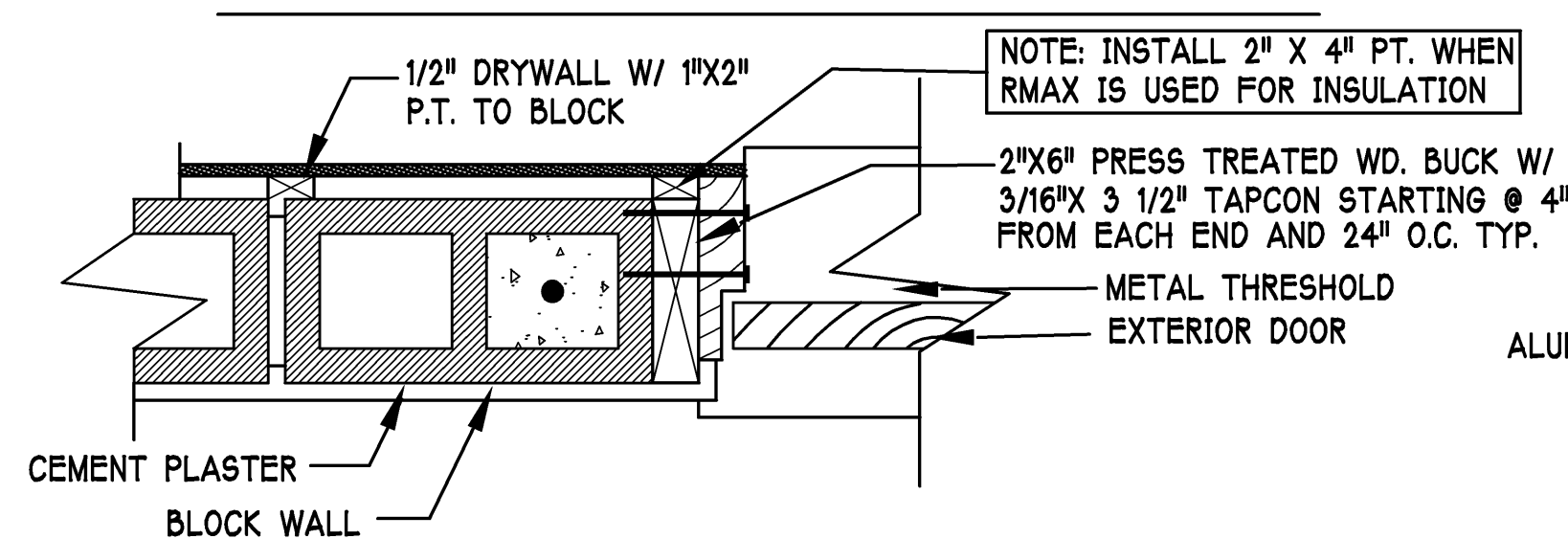


CONNECTOR SCHEDULE	
CONCRETE / MASONRY	CONNECTORS
UPLIFTS 0# TO 1195#	ETA-20
UPLIFTS 1195# TO 1890#	HETA-20
UPLIFTS 1890# TO 3780#	2-HETA-20
UPLIFTS 3780# TO 5420#	HPA-35
UPLIFTS 5420# TO 10840#	2-HPA-35
UPLIFTS 10840# TO 16620#	2-HD10A
WOOD CONNECTORS	CONNECTORS
UPLIFTS 0# TO 1000#	MTS12
UPLIFTS 1000# TO 2000#	2- MTS12
UPLIFTS 2000# TO 5250#	HTT22
UPLIFTS 5250# TO 10500#	2- HTT22
UPLIFTS 10500# TO 16620#	2-HD10A

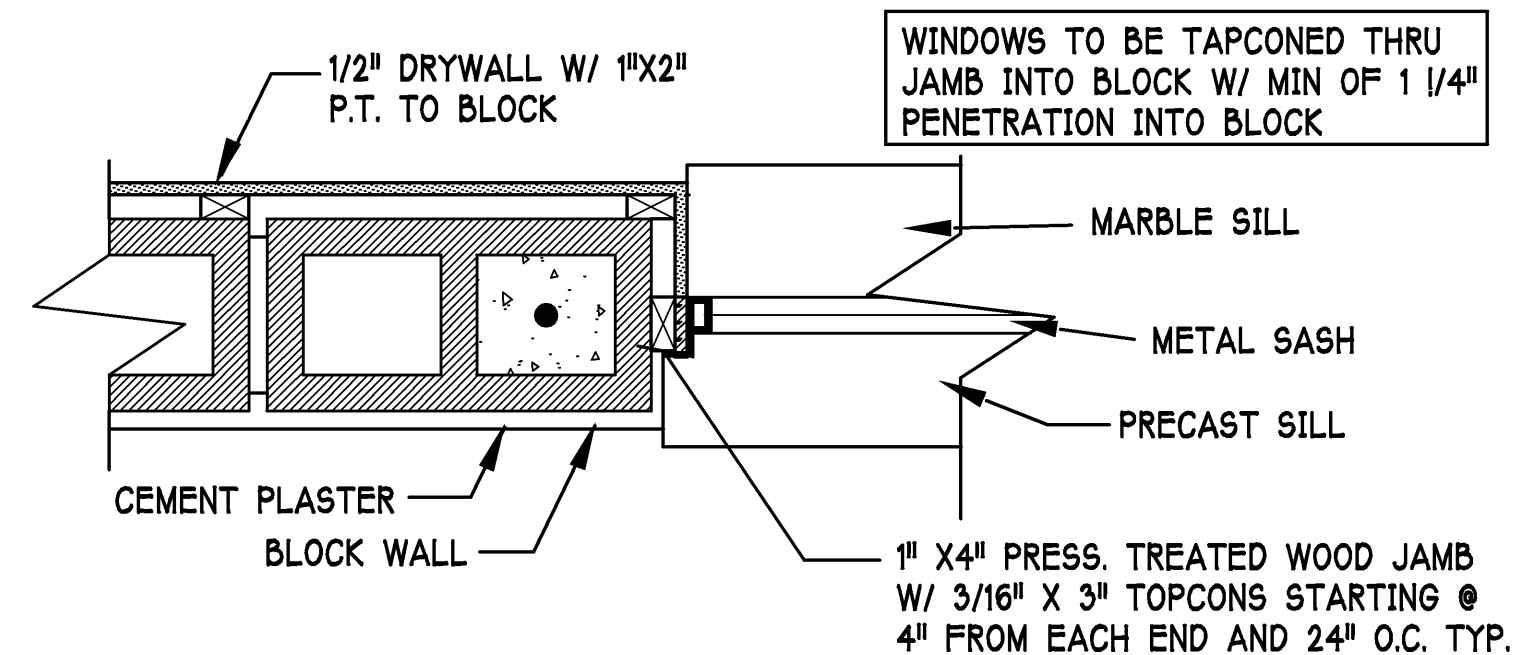
- 1) THESE STRAPS TO BE USED UNLESS OTHERWISE NOTED.
- 2) CONTRACTOR MAY SUPPLY AN EQUAL OR BETTER STRAP .
- 3) ALL STRAPS TO BE CONNECTED PER STRAP MANUFACTURE SPECIFICATIONS



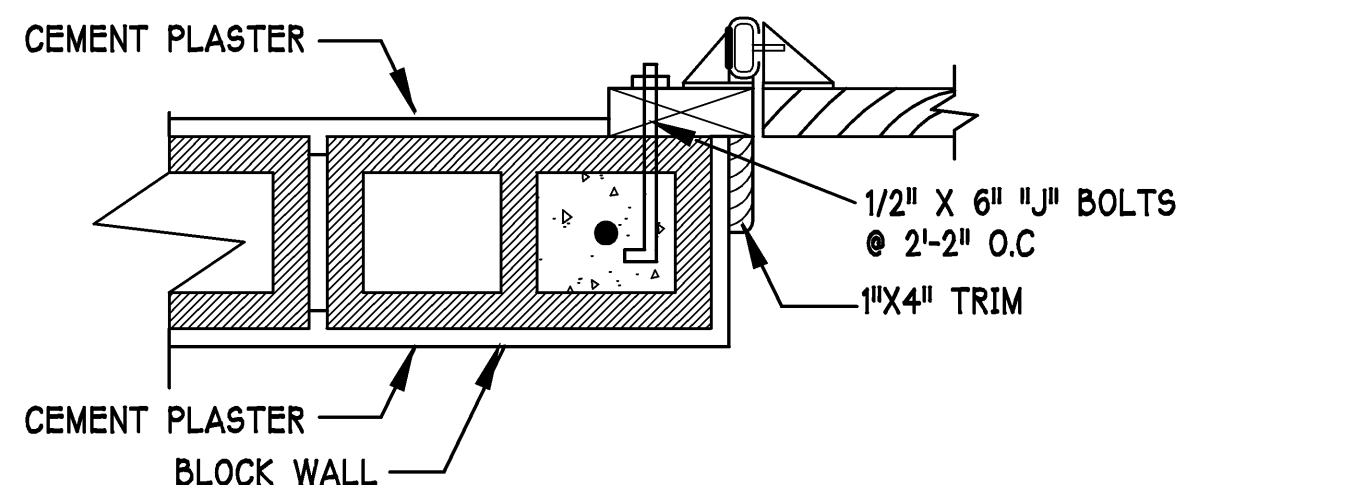
TOP PLATE SPLICE DETAIL BEARING WALL



DOOR JAM TO BLOCK DETAIL SCALE 1 1/2" = 1'-0"



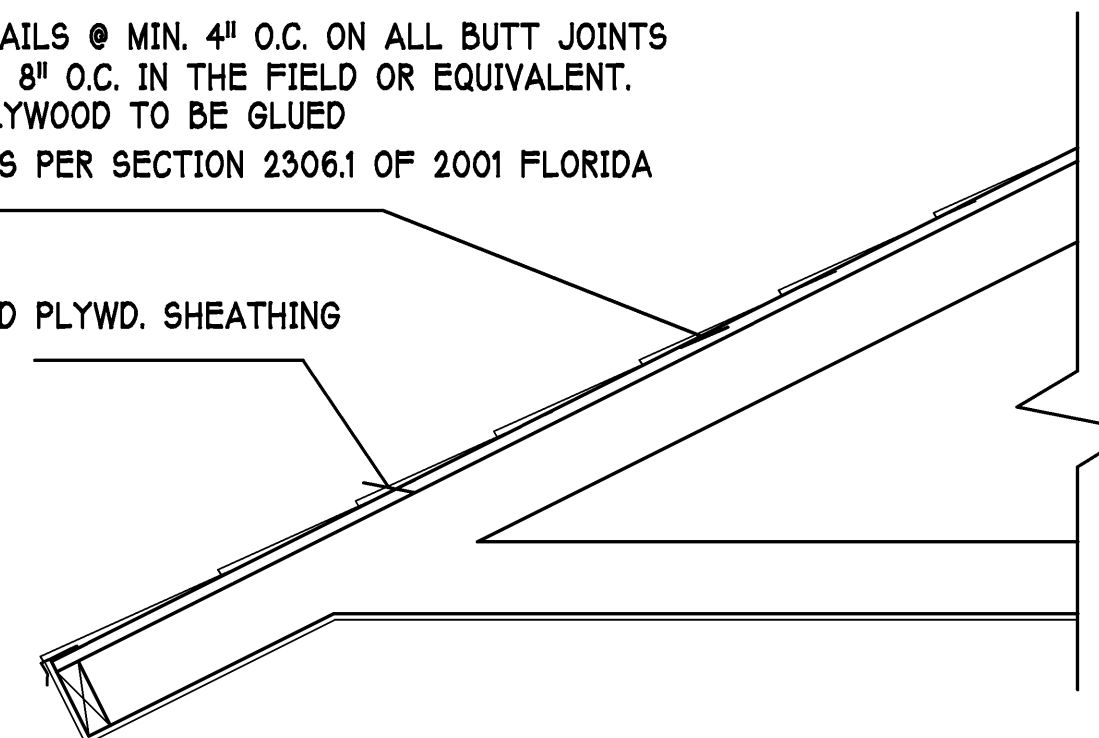
WINDOW JAM TO BLOCK DETAIL SCALE 1 1/2" = 1'-0"



GARAGE DOOR JAM DETAIL SCALE 1 1/2" = 1'-0"

ROOF REQUIRES 8D NAILS @ MIN. 4" O.C. ON ALL BUTT JOINTS AND 8D NAILS @ MIN. 8" O.C. IN THE FIELD OR EQUIVALENT. FIRST 2 ROWS OF PLYWOOD TO BE GLUED NAILING SCHEDULE AS PER SECTION 2306.1 OF 2001 FLORIDA BUILDING CODE

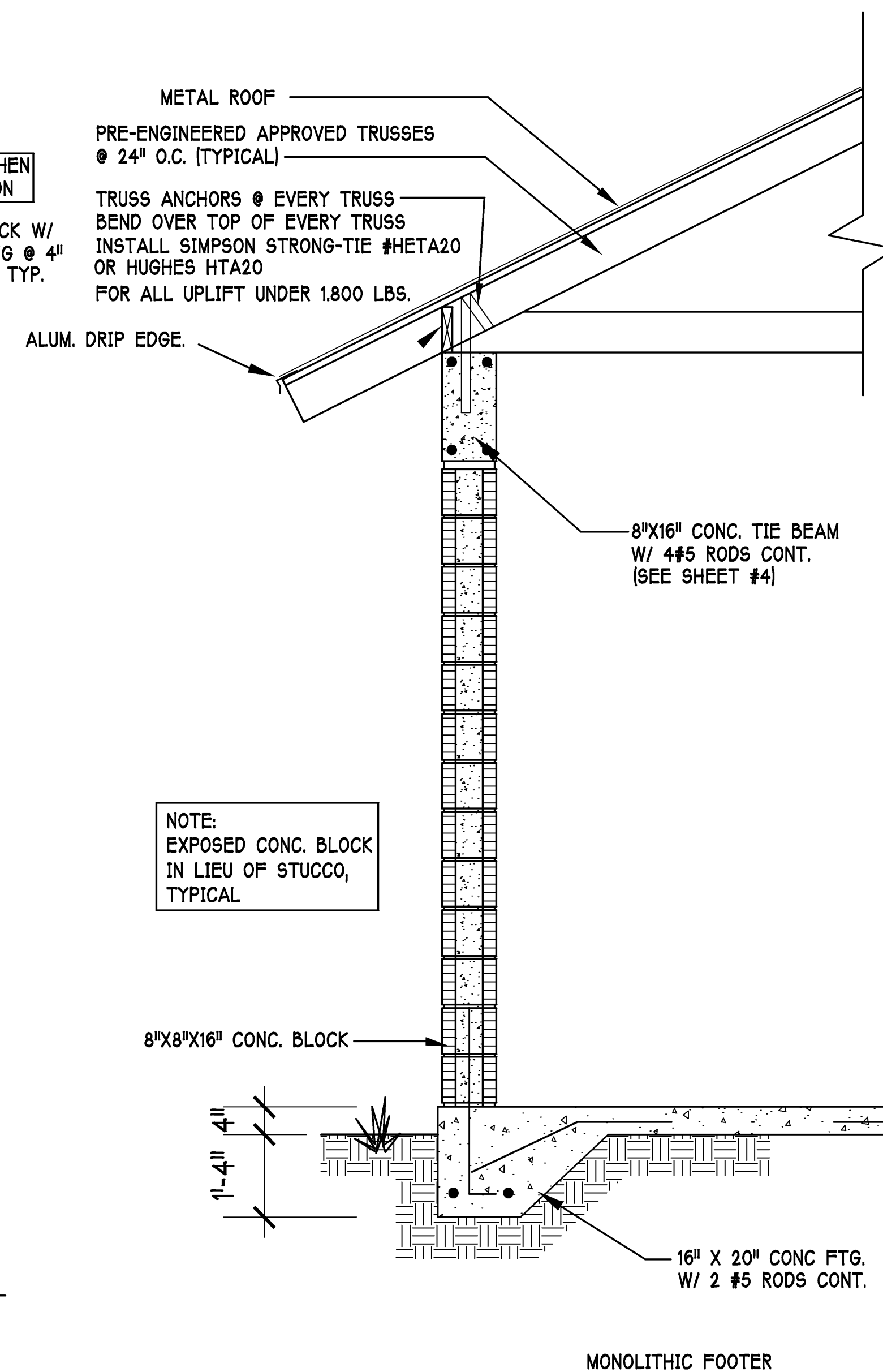
{15/32 EXPOSURE 1 C-D PLYWD. SHEATHING GRADE OR BETTER.}



ROOF ASSEMBLY REQUIREMENTS

ROOF COVERING NOTES:

ROOF COVERINGS MUST COMPLY TO THE FOLLOWING CODES: F.B.C. 2001 CHAPTER 15 SECTION 1507.3 FOR SHINGLES, 1507.4 FOR CLAY & CONCRETE TILE



NOTE: EXPOSED CONC. BLOCK IN LIEU OF STUCCO, TYPICAL

4" CONC. SLAB 3,000 P.S.I. W/ 6X6 #10/10 W.W.M. REINFORCING OVER .6 MIL. VISQUEEN BARRIER OR FIBER MESH W/ TERMITE TREATED MECHANICALLY COMPACTED FILL @ 95%.

TYPICAL WALL SECTION

SCALE: 3/4" = 1'-0"

Gulf Coast Drafting & Design  
Phone (239) 540-1822  
Fax (239) 540-7759

LOT: 7 BLOCK:  
ADDR: 12620 GLORIA BLVD.  
BORKEFLA, FL 33922

MODEL: CUSTOM  
RESIDENCE FOR: CARRALLO, MARIO

DATE: 4-3-09

DRAWN BY: JWC

CHECKED BY:

REVISED:

PLAN: SECTION

SCALE: 1/4"=1'-0"

SHEET#

A-7